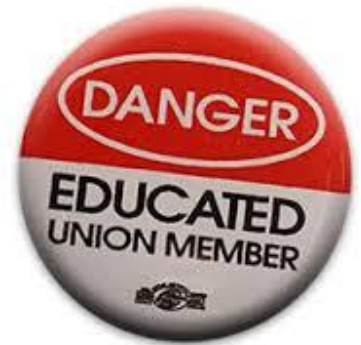




# USW Locals 2010 & 2010-01



## Understanding the Structure and Political Affiliations of your Union USW Local 2010-01

***EDUCATE – ENLIGHTEN - ENGAGE***



- A union is a collection of workers who understand that they can do better together when they negotiate with their employer as a collective.
- Wages and working conditions improve through collective bargaining. But the collective does not start and stop at the local level it moves out into the local community, Province and Country and even internationally.
- This education session will explain the Political Affiliations of the United Steelworkers International Union which is the body Queen's staff have chosen to align with in the fight for better wages and working conditions.



There are **5 levels** of political engagement all aimed at furthering the interests of workers, their families and communities.

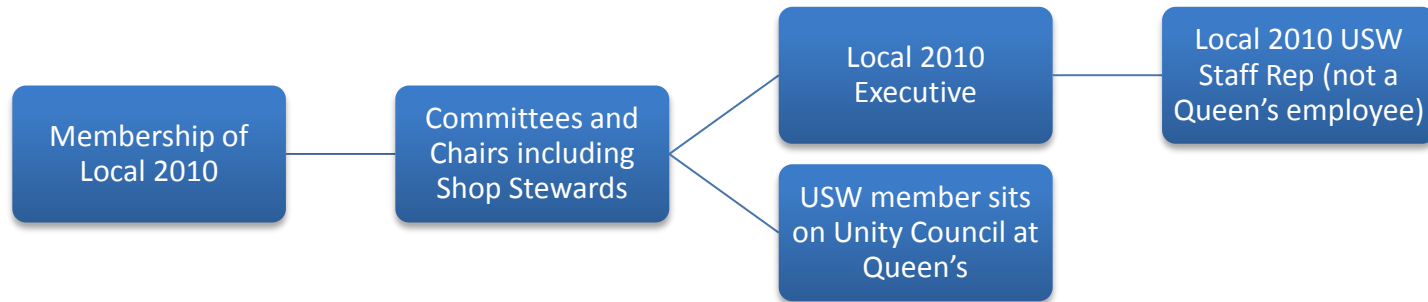
1. The USW Locals
2. Community Organizations
3. Provincial Bodies
4. National Bodies
5. International Organizations

Locals, the United Steelworkers structure and their affiliates advocate politically for policies and programs that improve the lives of all Canadians, such as the creation of better and more secure jobs, better public pension plans and retirement security, a stronger public health care system and affordable and accessible child care. Advocacy is done in the Parliament and in the courts to advance legislation that improves the day-to-day lives of all Canadians, such as workplace safety, collective bargaining rights and employment equity.



## Level One:

- Locals 2010 & 2010-01 Membership
- Locals 2010 & 2010-01 Executive, Committees and Chairs



- Unity Council: Comprises representatives from all employee groups at Queen's in order to better work together for the benefit of all.



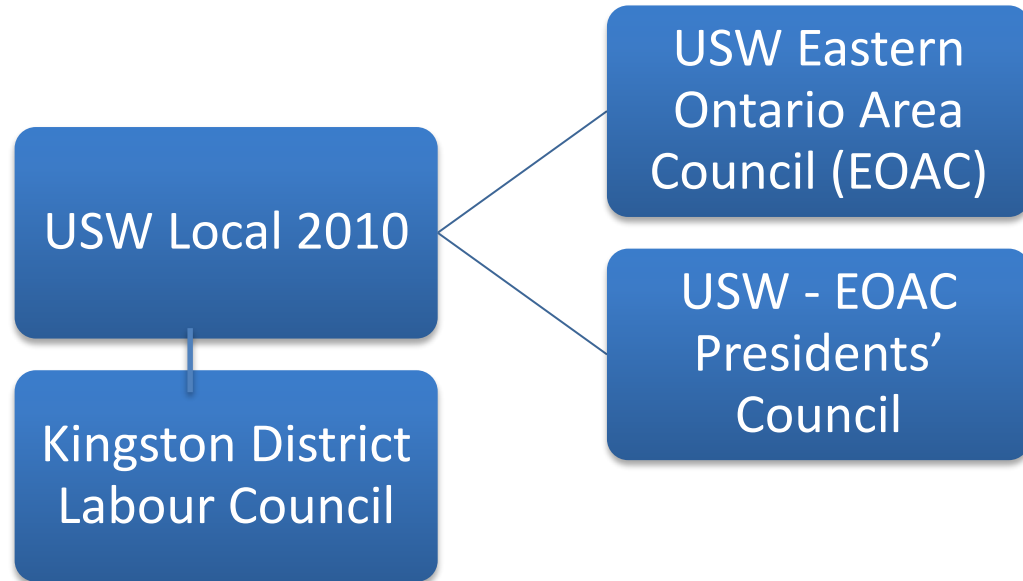
## Level Two:

At the community level the United Steelworkers has an **Eastern Ontario Area Council** to which our local belongs as well as **Presidents' Council** for all the area Presidents.

The membership fee is approximately \$4,800 per year [.35/member/month].

Local 2010 is also a member of the **Kingston and District Labour Council (KDLC)** – it represents over 40 member local unions in the Kingston region with a membership totaling almost 10,000 workers. The labour council is active in employment, municipal, provincial and social issues.

The membership fee is approximately \$4,100 per year [3.60/member/year].





## LEVEL THREE Our Province

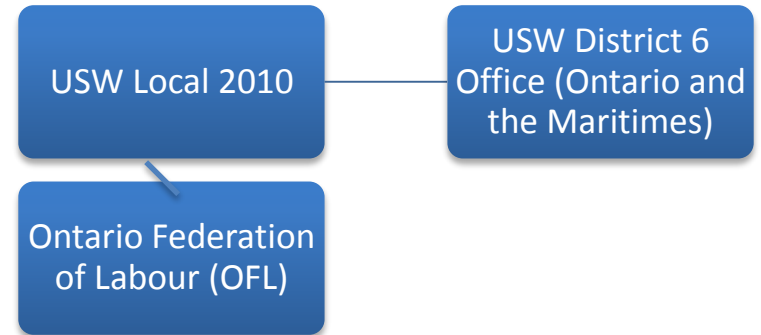


### Level Three:

At the Provincial level Local 2010 belongs to the **USW District 6** which covers Ontario and the Maritimes.

Local 2010 is also a member of the **Ontario Federation of Labour (OFL)** Just as workers unite in a union to protect their rights, so also do unions unite in central labour bodies to fight for better working and living conditions. The Ontario Federation of Labour (OFL) serves as an umbrella group for working people and their unions. From its inception in 1957, the OFL has grown to represent over one million Ontario workers belonging to more than 1,500 locals from 54 affiliated unions, making it Canada's largest provincial labour federation.

The membership fee is approximately \$8,700 per year [.63/member/month]



The OFL pushes for legislative change in every area that affects people's daily lives, including health, education, workplace safety, minimum wage and other employment standards, human rights, women's rights, workers' compensation, and pensions. It also makes regular presentations and submissions to the Ontario government and mounts internal and public awareness campaigns to mobilize the kind of political pressure that secures positive change for all workers – whether or not they belong to a union.

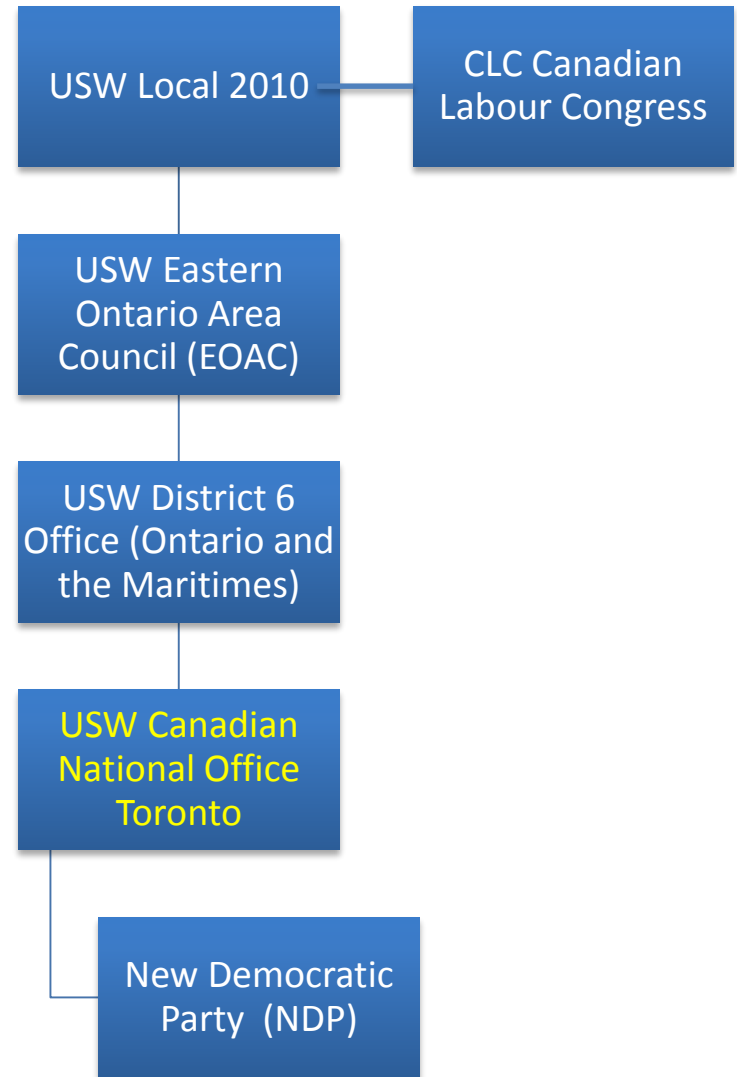


## Level Four:

At the national level in Canada the USW has a **Canadian National Office** located in Toronto.

The departments and services offered by the National Office include:

Research, Public Policy and Bargaining Support; Health, Safety and Environment Department; Education and Strategic Campaigns; Legal department; Communication and Political Action Department; Organizing department; Global affairs and workplace issues.

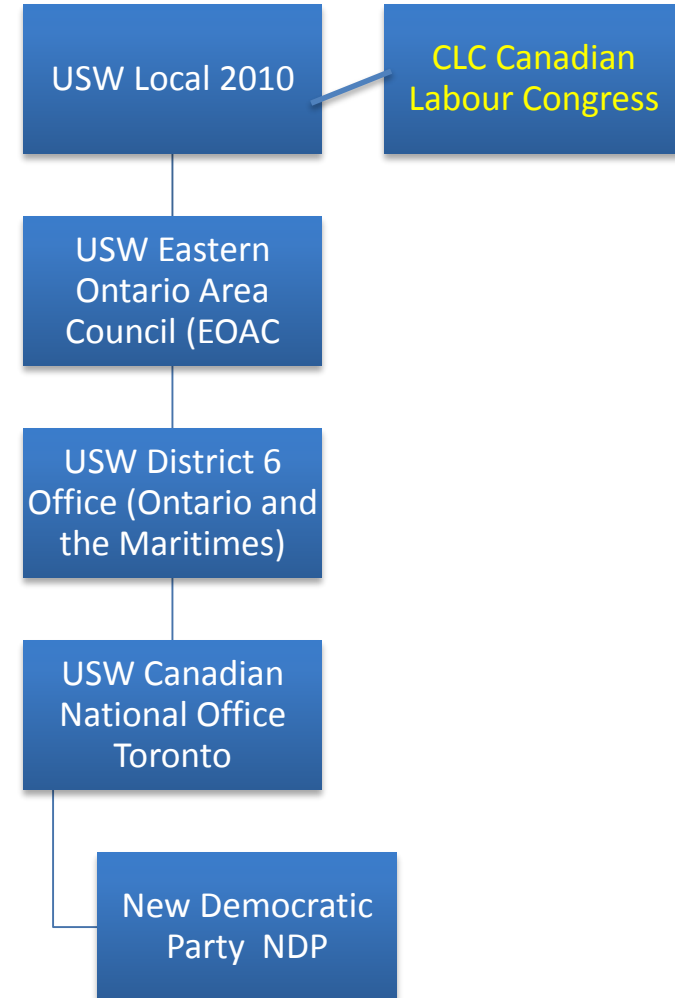




## Level Four:

Local 2010 is also a member of the **Canadian Labour Congress the largest labour organization in Canada** it brings together dozens of national and international unions, provincial and territorial federations of labour and community-based labour councils to represent **3.3 million workers** for more than 50 years. They advocate politically for policies and programs that improve the lives of all Canadians, they run education programs on workplace health and safety, fighting racism and discrimination, media and public relations, economics, campaign management, human rights and global solidarity, as well as workplace representation and union steward training. Their economists and researchers are nationally recognized for their skills and expertise, and produce in-depth analysis on issues such as working conditions, health and safety, wages and benefits, healthcare, pensions and retirement security, immigration, training, employment insurance and social and economic equality.

The membership fee is approximately \$10,000 per year  
[.75/member/month]



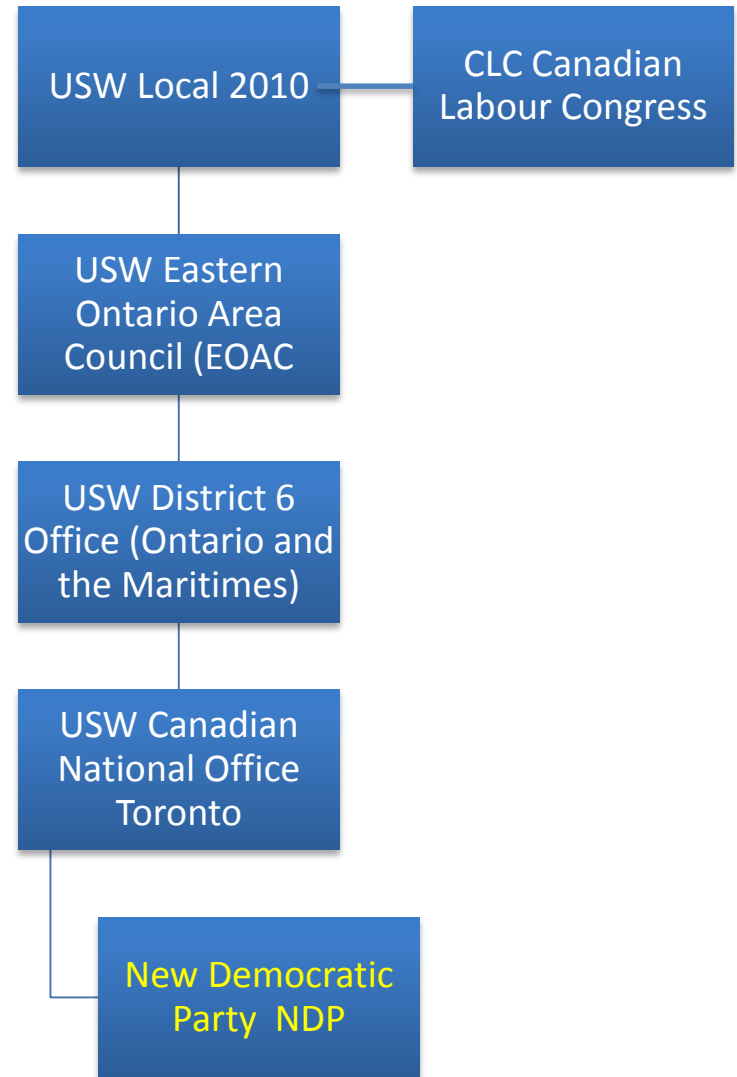




## Level Four:

The USW supports the **New Democratic Party**. Whether in opposition or government, only the NDP has consistently fought for working people. For example, health and safety standards, the right to refuse unsafe work and the Westray Bill are now enshrined in law thanks to the joint efforts of Steelworkers and elected members of the New Democratic Party (NDP).

Most USW locals give money to support the New Democratic Party through what is called the NDP per cap. In our local it is approximately \$3,300 per year [.24/member/month]





## **Why the Steelworkers Support the NDP:**

Here are some proposals the NDP have already made in support of workers and their families:

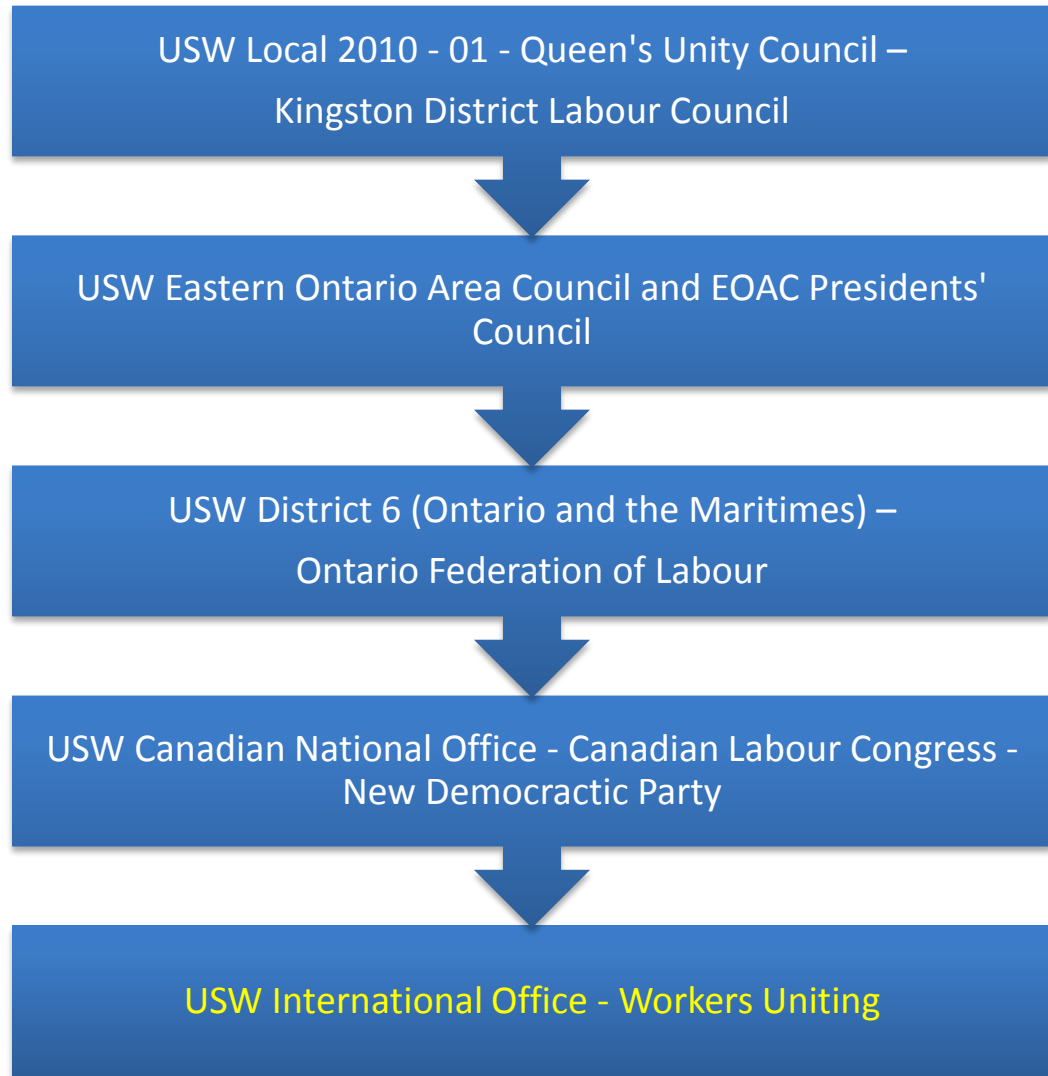
- Restoring the retirement age to 65
- Affordable childcare for \$15 a day
- Fighting income inequality by raising the federal minimum wage to \$15 per hour
- A national inquiry into murdered and missing indigenous women
- Abolishing the unelected, unaccountable Senate
- Standing up for the CBC and stopping cuts to Canada Post



## Level 5:

There are 13 USW districts in North America. **The International Office** is in Pittsburgh Pennsylvania.

The United Steel, Paper and Forestry, Rubber, Manufacturing, Energy, Allied Industrial and Service Workers International Union's 26-member International Executive Board is led by Leo W. Gerard, the son of a union miner whose leadership and vision has helped bring more than 300,000 new members into the ranks since taking office as International President in 2001.





## LEVEL FIVE International



## Level 5:

The United Steelworkers are also part of **Workers Uniting**:

Workers Uniting, representing three million members, is the international union created by Unite, the biggest union in the UK and Republic of Ireland, and the United Steelworkers, North America's largest private sector union. Workers Uniting is building international labour activism, recognizing that uniting as workers across international boundaries is the only way to challenge the injustices of globalization.



Workers Uniting draws on the energies of more than three million active and retired workers from the United States, Canada, Great Britain and the Republic of Ireland who work in virtually every sector of the global economy, including manufacturing, service, mining and transportation.

Website: [www.workersuniting.org](http://www.workersuniting.org)



USW Local 2010 - 01 - Queen's Unity Council - Kingston District Labour Council

**We have paid to belong to the KDLC since 2013 - \$3.60 per member per year.**

USW Eastern Ontario Area Council and EOAC Presidents' Council

**We will begin paying to belong to the EAOAC for 2015-2016 it is .35 cents per member per month.**

USW District 6 (Ontario and the Maritimes) - Ontario Federation of Labour

**We are not currently a member. In the future we will consider membership the cost is .63 cents per member per month.**

USW Canadian National Office - Canadian Labour Congress - New Democratic Party

**We will begin paying CLC dues for 2015-2016 the cost is .75 cents per member per month**

**We currently contribute .24 cents per member per month to the NDP. This was set up when we were under Administration.**

USW International Office - Workers Uniting



**EDUCATE – ENLIGHTEN - ENGAGE**